

# MULTIPLICATION

## 1

$1 \times 1 = 1$   
 $1 \times 2 = 2$   
 $1 \times 3 = 3$   
 $1 \times 4 = 4$   
 $1 \times 5 = 5$   
 $1 \times 6 = 6$   
 $1 \times 7 = 7$   
 $1 \times 8 = 8$   
 $1 \times 9 = 9$   
 $1 \times 10 = 10$



## 2

$2 \times 1 = 2$   
 $2 \times 2 = 4$   
 $2 \times 3 = 6$   
 $2 \times 4 = 8$   
 $2 \times 5 = 10$   
 $2 \times 6 = 12$   
 $2 \times 7 = 14$   
 $2 \times 8 = 16$   
 $2 \times 9 = 18$   
 $2 \times 10 = 20$



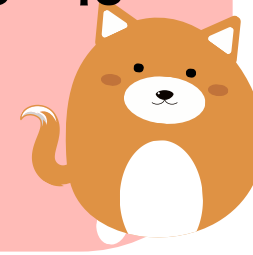
## 3

$3 \times 1 = 3$   
 $3 \times 2 = 6$   
 $3 \times 3 = 9$   
 $3 \times 4 = 12$   
 $3 \times 5 = 15$   
 $3 \times 6 = 18$   
 $3 \times 7 = 21$   
 $3 \times 8 = 24$   
 $3 \times 9 = 27$   
 $3 \times 10 = 30$



## 4

$4 \times 1 = 4$   
 $4 \times 2 = 8$   
 $4 \times 3 = 12$   
 $4 \times 4 = 16$   
 $4 \times 5 = 20$   
 $4 \times 6 = 24$   
 $4 \times 7 = 28$   
 $4 \times 8 = 32$   
 $4 \times 9 = 36$   
 $4 \times 10 = 40$



## 5

$5 \times 1 = 5$   
 $5 \times 2 = 10$   
 $5 \times 3 = 15$   
 $5 \times 4 = 20$   
 $5 \times 5 = 25$   
 $5 \times 6 = 30$   
 $5 \times 7 = 35$   
 $5 \times 8 = 40$   
 $5 \times 9 = 45$   
 $5 \times 10 = 50$



## 6

$6 \times 1 = 6$   
 $6 \times 2 = 12$   
 $6 \times 3 = 18$   
 $6 \times 4 = 24$   
 $6 \times 5 = 30$   
 $6 \times 6 = 36$   
 $6 \times 7 = 42$   
 $6 \times 8 = 48$   
 $6 \times 9 = 54$   
 $6 \times 10 = 60$



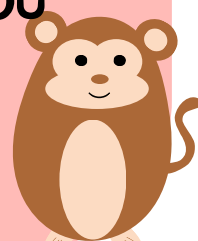
## 7

$7 \times 1 = 7$   
 $7 \times 2 = 14$   
 $7 \times 3 = 21$   
 $7 \times 4 = 28$   
 $7 \times 5 = 35$   
 $7 \times 6 = 42$   
 $7 \times 7 = 49$   
 $7 \times 8 = 56$   
 $7 \times 9 = 63$   
 $7 \times 10 = 70$



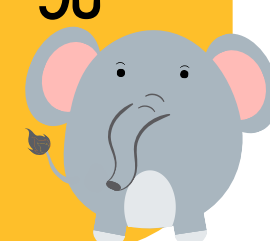
## 8

$8 \times 1 = 8$   
 $8 \times 2 = 16$   
 $8 \times 3 = 24$   
 $8 \times 4 = 32$   
 $8 \times 5 = 40$   
 $8 \times 6 = 48$   
 $8 \times 7 = 56$   
 $8 \times 8 = 64$   
 $8 \times 9 = 72$   
 $8 \times 10 = 80$



## 9

$9 \times 1 = 9$   
 $9 \times 2 = 18$   
 $9 \times 3 = 27$   
 $9 \times 4 = 36$   
 $9 \times 5 = 45$   
 $9 \times 6 = 54$   
 $9 \times 7 = 63$   
 $9 \times 8 = 72$   
 $9 \times 9 = 81$   
 $9 \times 10 = 90$



## 10

$10 \times 1 = 10$   
 $10 \times 2 = 20$   
 $10 \times 3 = 30$   
 $10 \times 4 = 40$   
 $10 \times 5 = 50$   
 $10 \times 6 = 60$   
 $10 \times 7 = 70$   
 $10 \times 8 = 80$   
 $10 \times 9 = 90$   
 $10 \times 10 = 100$

